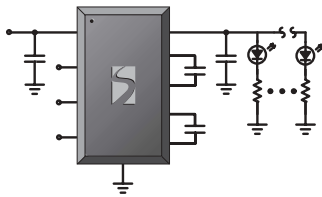


powerful portables start here

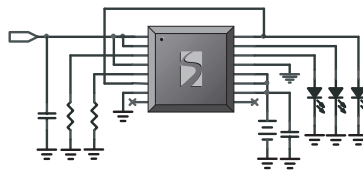
### SC600 LED Driver



Ultra-high efficiency driver for portable display backlighting.

- Fractional charge pump
- Highest efficiency—up to 92%
- Drives up to 6 LEDs

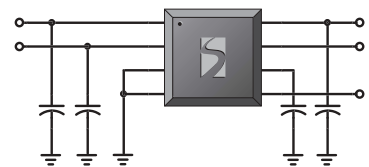
### SC801 Li-Ion Charger



Complete Li-Ion battery charging system on a single chip.

- Programmable precharge, fast-charge, and termination current
- Small 4 x 4mm leadless package

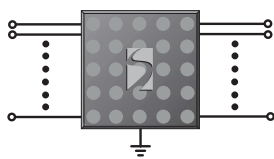
### SC1454 LDO Regulator



Dual 150mA regulator with only 155mV drop out.

- Low output noise (typ. 50 $\mu$ V<sub>RMS</sub>)
- Low 0.2 $\mu$ A quiescent current
- Suitable for Bluetooth applications

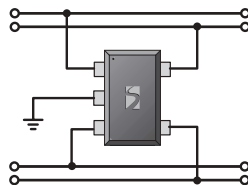
### SFC2309 LCD Protector



Space-saving flip-chip protection for color LCD displays from ESD and EMI.

- Protects/filters up to 10 lines
- >25dB attenuation, 800MHz-3GHz
- ESD protection > 15kV

### SMF3.3 ESD Protector



True 3.3V ESD transient suppression array protects up to 4 data lines.

- Low operating voltage (3.3V)
- Low leakage current (<0.5 $\mu$ A)
- Low capacitance (30pf)

Semtech offers powerful ways to add color, battery management, connectivity, and protection to your latest portable designs. To get the complete story on these new products, and to find out more about Semtech's entire "powerful portables" line, visit [www.semtech.com/pwrport](http://www.semtech.com/pwrport).

SEMTECH POWER AND PROTECTION

