

### XE8000EV121 Firmware Programming

### Evaluation board for SX8723/24/25

#### Introduction

The onboard microcontroller is a gateway providing translation between UART (computer side) and I2C (SX87xx side). Some communication problems may occur due to wrong manipulation on the board, this document describes how to re-program the firmware.

The XE8000EV121 gateway firmware is available on Semtech web site, or by request at this e-mail address: [support\\_sensing@semtech.com](mailto:support_sensing@semtech.com)

Recommended reading: XE8000EV121 User Guide

#### Programming procedure

##### 1. Connect the board

Connect the board to your USB port, and then switch on the XE8000EV121 using the *Power* switch (top left side of the board).

*Note:* Ensure that the jumper at the right of the power switch is either connected on 3.3V or 5V\_USB. For more information on how to determine which Serial COM port has been assigned please refer to the XE8000EV121 User Guide.

##### 2. Set the PIC Gateway in programming mode

The gateway program (br10) jumper allows the user to programme the onboard PIC16F877A. By default, the jumper is not connected.

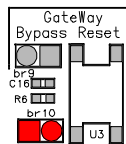


Figure 1. Gateway program jumper

On the board, shortcut the *br10* jumper and press the Reset button. Now the chip is set in programming mode. After the reset, the shortcut of *br10* jumper is not necessary.

##### 3. Start the Graphical User Interface

Once the board is connected launch the GUI from Windows *Start Menu->Programs->SX87xx->SX87xx* and the GUI main window will open.

##### 4. Open the programming window

Select the Serial COM port corresponding to your XE8000EV121 board on the GUI toolbar. Don't click on the Open button. Only select the correct port.

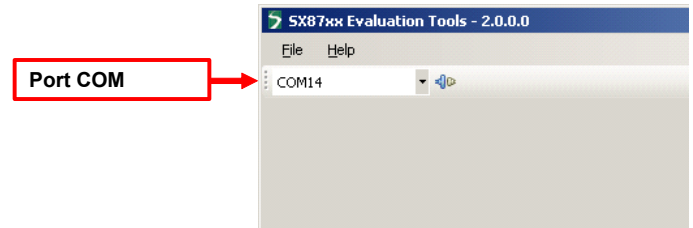


Figure 2. COM port selection

Press the Ctrl+Alt+P on the keyboard to open a programming window.

##### 5. Program the firmware

Click on the *Browse* button and select the firmware to upload in the microcontroller. The default file name is *gateway.hex*.

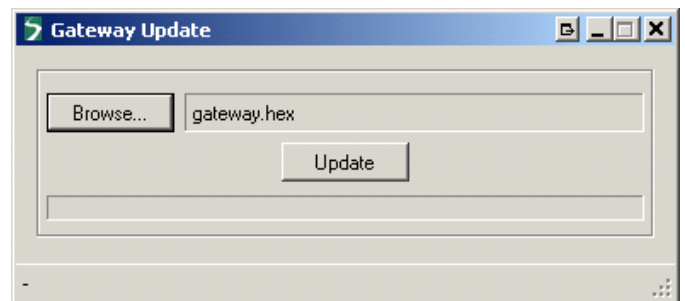


Figure 3. Programming window

Click the *Update* button to program the microcontroller. After a few seconds, if the programming has been done correctly a message appears: *The gateway has been updated successfully.*

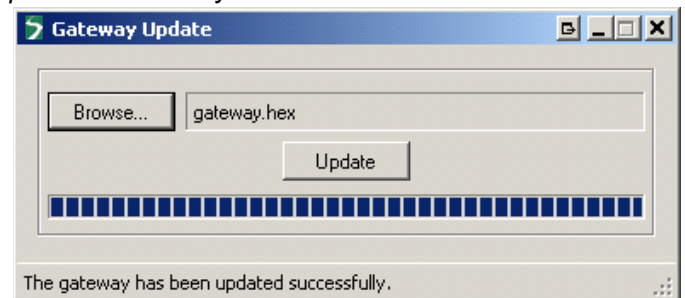


Figure 4. Successful programming

### 1. Annex: XE8000EV121 board layout

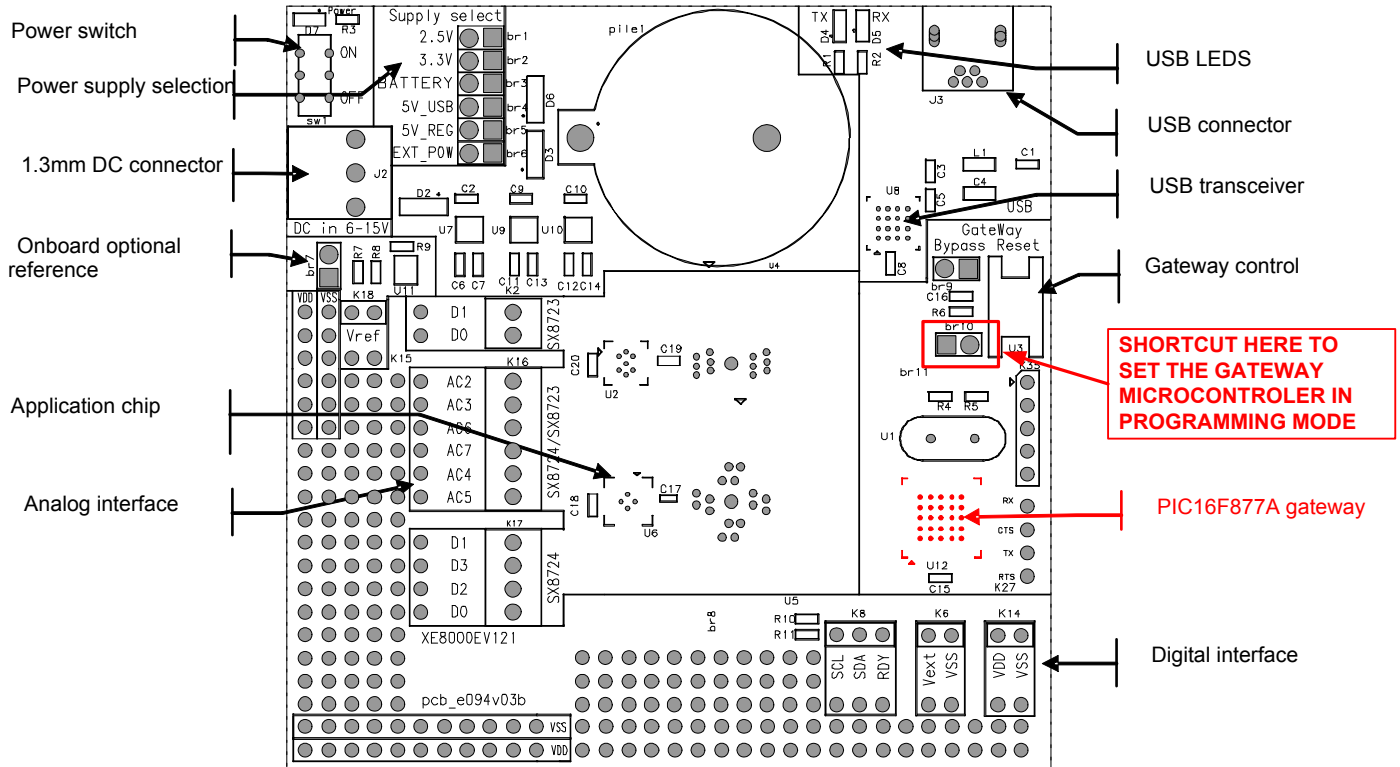


Figure 5. XE8000EV121 board layout

© Semtech 2008

All rights reserved. Reproduction in whole or in part is prohibited without the prior written consent of the copyright owner. The information presented in this document does not form part of any quotation or contract, is believed to be accurate and reliable and may be changed without notice. No liability will be accepted by the publisher for any consequence of its use. Publication thereof does not convey nor imply any license under patent or other industrial or intellectual property rights. Semtech assumes no responsibility or liability whatsoever for any failure or unexpected operation resulting from misuse, neglect improper installation, repair or improper handling or unusual physical or electrical stress including, but not limited to, exposure to parameters beyond the specified maximum ratings or operation outside the specified range.

SEMTECH PRODUCTS ARE NOT DESIGNED, INTENDED, AUTHORIZED OR WARRANTED TO BE SUITABLE FOR USE IN LIFE-SUPPORT APPLICATIONS, DEVICES OR SYSTEMS OR OTHER CRITICAL APPLICATIONS. INCLUSION OF SEMTECH PRODUCTS IN SUCH APPLICATIONS IS UNDERSTOOD TO BE UNDERTAKEN SOLELY AT THE CUSTOMER'S OWN RISK. Should a customer purchase or use Semtech products for any such unauthorized application, the customer shall indemnify and hold Semtech and its officers, employees, subsidiaries, affiliates, and distributors harmless against all claims, costs damages and attorney fees which could arise.

## Contact information

### Semtech Corporation Advanced Communications & Sensing Products

E-mail: [sales@semtech.com](mailto:sales@semtech.com) [acsupport@semtech.com](mailto:acsupport@semtech.com) Internet: <http://www.semtech.com>

#### USA

200 Flynn Road, Camarillo, CA 93012-8790.  
Tel: +1 805 498 2111 Fax: +1 805 498 3804

#### FAR EAST

12F, No. 89 Sec. 5, Nanking E. Road, Taipei, 105, TWN, R.O.C.  
Tel: +886 2 2748 3380 Fax: +886 2 2748 3390

#### EUROPE

Semtech Ltd., Units 2 & 3, Park Court, Premier Way, Abbey Park Industrial Estate, Romsey, Hampshire, SO51 9DN.  
Tel: +44 (0)1794 527 600 Fax: +44 (0)1794 527 601



ISO9001  
CERTIFIED