

---

# TN1200.03

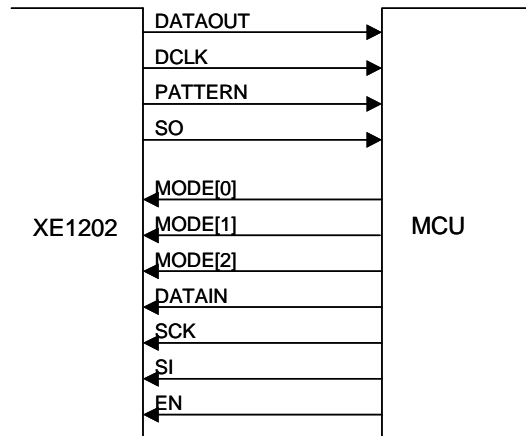
## Technical Note

---

*Interfacing the XE1202  
to a Microcontroller*

## INTRODUCTION

The XE1202 device is defined with 11 interface lines from a baseband processor or MCU; DATAOUT, DATAOUT, and DCK - data and data clock, PATTERN - the output of the pattern recognition feature, SCK, SI, and SO for the 3-wire serial bus interface, MODE[2:0] to define the operating mode, and EN which operates as a chip select line. 4 lines are outputs, 7 are inputs.

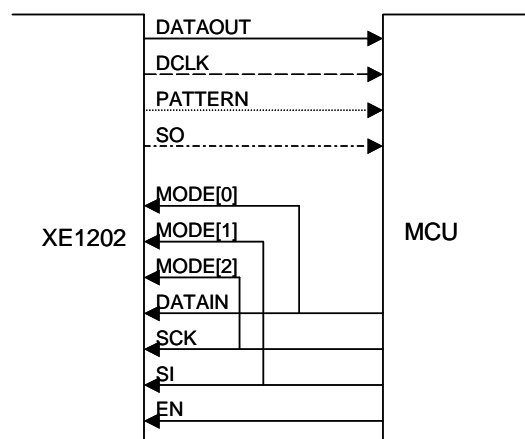


Some applications may require less I/O lines and/or fewer features. In this case and under well-defined conditions it is possible to reduce the number of lines between an MCU and the XE1202.

## MINIMUM INTERFACE WITHOUT ADDITIONAL CIRCUITRY

For applications that do not require the bit synchronizer output DCK<sup>\*1</sup>, nor the pattern recognition, nor the RSSI and FEI functions, it is possible to reduce the number of lines down to 5 without additional circuitry. This is achieved by multiplexing MODE[2:0] with SCK, SI, and DATAIN. One additional line is required for each of the features listed above (DCK, PATTERN, and SO for the RSSI/FEI). This is illustrated in the figure below.

Note<sup>\*1</sup>:this doesn't imply the bit synchronizer function is OFF. One can turn this function ON and use it as a data filter on DATAOUT



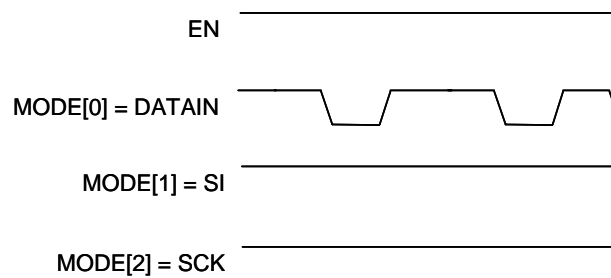
The multiplex of MODE[2:0] with SCK, SI, and DATAIN implies some careful design to avoid difficulties with XE1202, as listed on the next page.

### STANDARD OPERATING MODE

When in sleep, stand-by, receive, or transmit mode, EN, SI = MODE[1], and SCK = MODE[2] should stay "high".

In transmit mode DATAIN = MODE[0] will vary according to the bit stream to be emitted while in transmit mode. Otherwise this line can be "high" or "low".

#### TRANSMIT MODE

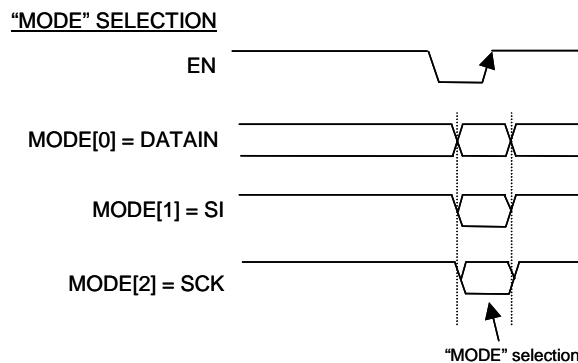


### MODE Selection

To modify the MODE selection one should proceed as follows:

- the EN line becomes "low"
- then the new MODE selection is applied to MODE[2]=SCK, MODE[1]=SI, and MODE[0]=DATAIN. Here, it is key to limit the number of transitions on MODE[2]=SCK to less than 8 (in principle none or one should be sufficient)
- then the EN line becomes "high"
- finally, the SCK and SI go back to "high" and DATAIN back to the level it had before the MODE selection.

This is illustrated below

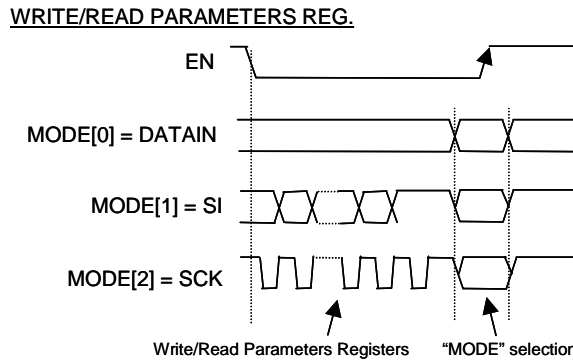


### Write/Read to/from the parameters registers

Here, user should first follow the standard write or read sequence described in the xe1202 datasheet. As described in this document, while the EN line is "low" it is possible to write in one or more registers. These sequences must be complete sequences with the appropriate number of clock cycles on SCK.

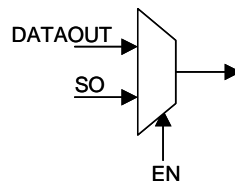
Then, and before the EN line is set to "1", the MODE selection should be applied to MODE[2]=SCK, MODE[1]=SI, and MODE[0]=DATAIN. Here, it is key to limit the number of transitions on MODE[2]=SCK to less than 8 (in principle none or one should be sufficient)

After this the EN line goes “high”, and finally SCK and SI go back to “high” and DATAIN back to the level it had before the MODE selection.



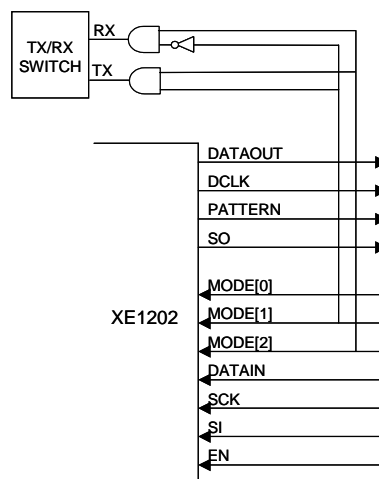
### MINIMUM INTERFACE WITH ADDITIONAL CIRCUITRY

Further to the multiplex of input lines listed above, it is possible to combine both DATAOUT and SO lines through a MUX that is controlled by the EN line. When in normal operating mode (EN=1), DATAOUT is selected, while in write/read parameters registers mode (EN=0) SO is selected. By doing so, it is assumed the incoming bitstream on DATAOUT can be ignored while the XE1202 is accessed through its 3-wire serial bus interface.



### TX/RX SWITCH CONTROL

For applications that require a Tx/Rx switch in the transmit/receive path between the antenna and XE1202, the control circuitry below is recommended.



© Semtech 2006

All rights reserved. Reproduction in whole or in part is prohibited without the prior written consent of the copyright owner. The information presented in this document does not form part of any quotation or contract, is believed to be accurate and reliable and may be changed without notice. No liability will be accepted by the publisher for any consequence of its use. Publication thereof does not convey nor imply any license under patent or other industrial or intellectual property rights. Semtech. assumes no responsibility or liability whatsoever for any failure or unexpected operation resulting from misuse, neglect improper installation, repair or improper handling or unusual physical or electrical stress including, but not limited to, exposure to parameters beyond the specified maximum ratings or operation outside the specified range.

SEMTECH PRODUCTS ARE NOT DESIGNED, INTENDED, AUTHORIZED OR WARRANTED TO BE SUITABLE FOR USE IN LIFE-SUPPORT APPLICATIONS, DEVICES OR SYSTEMS OR OTHER CRITICAL APPLICATIONS. INCLUSION OF SEMTECH PRODUCTS IN SUCH APPLICATIONS IS UNDERSTOOD TO BE UNDERTAKEN SOLELY AT THE CUSTOMER'S OWN RISK. Should a customer purchase or use Semtech products for any such unauthorized application, the customer shall indemnify and hold Semtech and its officers, employees, subsidiaries, affiliates, and distributors harmless against all claims, costs damages and attorney fees which could arise.

#### Contact Information

Taiwan	Tel: 886-2-2748-3380 Fax: 886-2-2748-3390	Switzerland	Tel: 41-32-729-4000 Fax: 41-32-729-4001
Korea	Tel: 82-2-527-4377 Fax: 82-2-527-4376	United Kingdom	Tel: 44-1794-527-600 Fax: 44-1794-527-601
Shanghai	Tel: 86-21-6391-0830 Fax: 86-21-6391-0831	France	Tel: 33-(0)169-28-22-00 Fax: 33-(0)169-28-12-98
Japan	Tel: 81-3-6408-0950 Fax: 81-3-6408-0951	Germany	Tel: 49-(0)8161-140-123 Fax: 49-(0)8161-140-124

Semtech International AG is a wholly-owned subsidiary of Semtech Corporation, which has its headquarters in the U.S.A